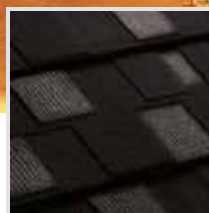


# DECRA<sup>®</sup>

## ROOFING SYSTEMS



## The **Original** Stone Coated Metal Roof Tile

# DECRA<sup>®</sup>

## ROOFING SYSTEMS

### TRIED • TESTED • TRUSTED

Thank you for taking an interest in Decra<sup>®</sup> Roofing Systems, the world's ORIGINAL stone coated roofing tile. With a heritage of over 55 years, there are many examples of Decra<sup>®</sup> roofs all over Africa, vibrant in colour and proving the test of time. Our natural stone coating blends seamlessly with the African landscape, while the tough alu-zinc steel beneath resists corrosion and rust - backed by our fifty year warranty. This brochure aims to demonstrate why Decra<sup>®</sup> has led the world in metal roof tiles for over half a century, but if you need more information, please don't hesitate to contact your official Decra<sup>®</sup> distributor or visit us at [www.decraafrica.com](http://www.decraafrica.com).

### PROVEN AROUND THE WORLD

The Decra<sup>®</sup> story begins in 1954 after the New Zealander, Lou Fisher, discovered that the bitumen coating used on metal roofs in the UK had extended their life considerably. Back in New Zealand, he produced his first coated metal roof tile and so the origins of Decra<sup>®</sup> Roofing were born.

Over time, various new technologies and coatings have been employed and we continue to improve our manufacturing process so that our products today still lead the way in design and innovation. Decra<sup>®</sup> Roofing tiles are tried, tested and trusted in over 120 countries worldwide.



Keep updated with our latest developments by joining us on social media:



# SUCCESS YOU CAN SEE



The roof. Most probably the first part of your new home that people will see. That first impression will determine how people view your house and your style. Decra® roofs give first impressions that last a lifetime with

vibrant, consistent colours which never fade or change colour. A Decra® roof is a perfect demonstration of your success; strong, stylish and everlasting.

That's why dream homes deserve Decra®.

#GenuineDecra

**DECRA**<sup>®</sup>  
ROOFING SYSTEMS

# INTERNAL STRENGTH EXTERNAL BEAUTY

## ALU-ZINC STEEL

All Decra® roof products are manufactured from alu-zinc steel which have shown in tests to last 6-9 times longer than ordinary galvanised steel roofing products. This is achieved by protecting the steel core with zinc, which is itself protected by an aluminium barrier. As a pioneer of using alu-zinc steel, Decra® has unrivalled experience in long lasting steel roof tile manufacture.



## NATURAL STONE

Decra® Roofing tiles are coated with natural stone chips, volcanically formed and taken from quarries in New Zealand. These coatings add natural beauty to the roof and a hard layer of protection from the weather. Being of natural stone, the vibrant colour is protected against the extreme UV of the African sun and will never change.

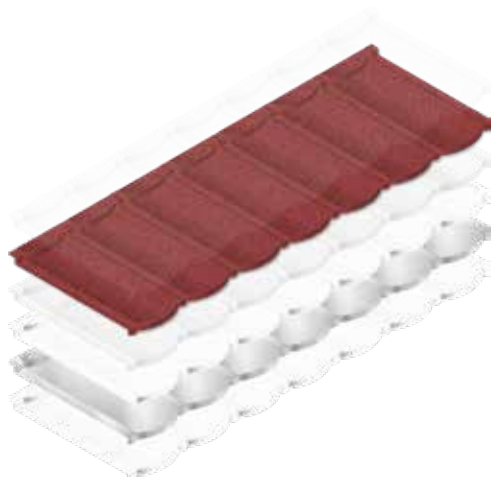


# FEATURES



## COATING TECHNOLOGY

Since 1957 we have continually innovated and developed our technology so that today we lead the way in design, quality, performance and durability. Our natural stone chips are embedded deep in our own patented basecoat and sealed in an acrylic resin to ensure they stay permanently fixed to the tile. The finished tiles are then oven baked to ensure durability.



- Acrylic Overglaze
- Natural Stone Chips
- Basecoat
- APS Acrylic Coating
- Alu-Zinc Coated Steel
- APS Acrylic Coating



# BENEFITS

## SECURITY



An overlapping Decra® roof tile is secured to the two tiles on either side, the above tile, the below tile and the rafter - making a Decra® roof incredibly secure against intruders and extreme high winds.

## LIGHTWEIGHT

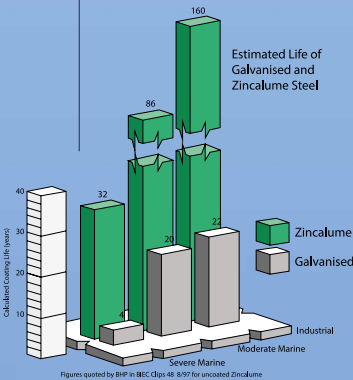


At only 7.0kg/m<sup>2</sup>, Decra® roof tiles can save considerable costs in the roof structure (rafters, trusses, battens etc.), foundations and transport. One ton of Decra® tiles is equivalent to ten tons of clay or concrete tiles!

## COASTAL LIVING



Decra® roofing tiles are proven to have a life span 6 to 9 times greater than galvanised roofing materials. If you live by the coast, Decra® is the perfect choice for you, especially with our 50 Year Written Warranty.



## TESTING AND INSPECTION



Every Decra® roof tile is inspected by hand to ensure consistent quality. We also test our own and competitor's products in our laboratories to ensure that Decra® continues to perform better than any other metal roof tile.



## WEATHER PERFORMANCE



Our tiles are tested against 200kph hurricane conditions at the Construction Research Laboratory in Miami and the Cyclone Testing Station in Australia.

## HERITAGE



We invented the steel roofing tile in 1957. No one has as much experience as we do in delivering quality and durability.

## FIRE RESISTANCE



Decra® tiles are tested up to 760°C and during tests showed no flames, sparks or smoke. This is particularly beneficial in areas of high temperature or commercial/public buildings.

## FAST INSTALLATION



Quick installation times can lead to further cost savings in the construction of your home. Decra® tiles are fast to install, making your home weather-sealed quicker.





# HERITAGE

HERITAGE

Inspired by a lasting and elegant heritage handed down over generations, 21st Century architects are rediscovering the traditional values of earlier times. With this historical legacy of great architects, their building and roofing styles continue to inspire designers of today. Incorporating the heritage of the past and today's modern design requirements, Decra® Roofing has created a distinctive tile design to carry us through the 21st Century.

With its scalloped profile and choice of natural colours, it's easy to see why Decra® Heritage is the world's best selling stone coated steel roof tile.







#GenuineDecra



# MILANO

MILANO

Inspired by traditional Roman tile design, Decra® Milano looks smooth, clean and elegant. Its timeless profile makes a strong statement, especially on steeply pitched roofs, and with a Mediterranean heritage is ideally suited to coastal properties and those wanting to make a statement of style.





#GenuineDecra

**DECRA**<sup>®</sup>  
ROOFING SYSTEMS



# SHAKE

SHAKE

Europeans emigrating to America in the 17th and 18th Centuries took traditional English, Dutch, French and German roof styles and recreated them in timber. Splitting cedar with an axe to make roof tiles, or 'shakes', these roofs created natural, aesthetically pleasing looks which have stood the test of time.

Today, Decra® Shake tiles take the best of the shake design and combine it with cutting edge technology to produce traditional, natural looking roofs with superior long life performance.



Decra® Shake is particularly popular as a modern replacement for thatch or majani roofs, where Decra® tiles fireproof qualities offer extra security, while stone coated shake designs offer a natural look.





#GenuineDecra

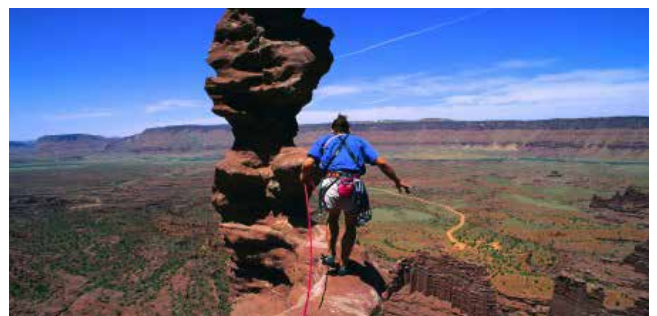
**DECRA**<sup>®</sup>  
ROOFING SYSTEMS



# SHINGLE

SHINGLE

A style statement that works with both contemporary and traditional architecture, Decra® Shingle has a distinctive vertical ridge textured finish that gives your roof solidarity and character. Available in a selection of natural colours which reflect the heritage of shingle roofs, Decra® Shingle tiles are also available with a unique two-tone colour patch arrangement. However, the appeal of Decra® Shingle is much more than its natural colour hues. Shingle tile ridges cast deep shadows which give considerable variations in feel and texture throughout the day depending on the sun's position. Homeowners love the fact that Decra® Shingle gives their home a different appearance at different times of the day.





#GenuineDecra

**DECRA**<sup>®</sup>  
ROOFING SYSTEMS



# SLATE

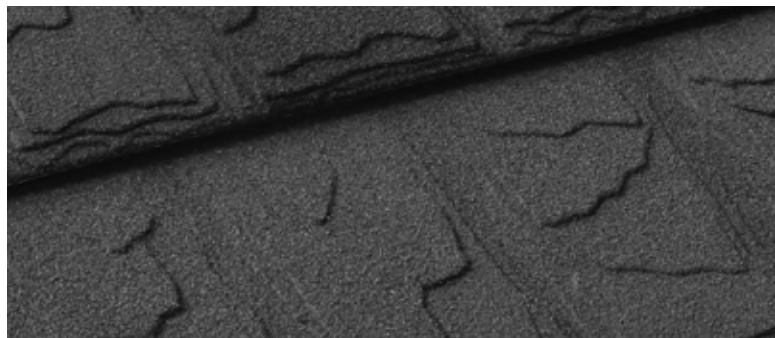
SLATE

Decra® Slate has been designed to replicate the natural weathered look of traditional European slate roofs. The unique profile comes with the option of random patches of colour which are only subtly different to the main tile colour. The effect is a very natural looking roof, with shadows and crevices that entice the eye.

Decra® Slate is manufactured using mainly renewable energy in one of the world's most pollution-free environments. Customers can collect rainwater from Decra® Slate roofs in large tanks for both domestic and agricultural use, approved to WHO standards.







#GenuineDecra

**DECKRA**  
ROOFING SYSTEMS

# #Genuin

## Protecting Your Investment

All **genuine** Decra® roof tiles have the Decra® logo printed on the back of the tile and are only available from official Decra® distributors.



# neDecra

✓ Alu-Zinc Steel Tile

✓ Advanced Technology

✓ Natural Volcanic Stone Coating

## Make Sure It's #GenuineDecra

Like all leading brands of innovative and desired products, there are fakes and copies of Decra® tiles that are offered for sale as the real thing. **BEWARE**, because those roofs will not perform to our high standards.

Fortunately, we have made it easy for you to tell genuine Decra® from the rest.

Genuine Decra® roof tiles have the Decra® logo printed on the back of the tile. Look for this logo before you buy and install.

In addition, a unique production code is also printed on the back of the tile - you will need this to register for your free 50 year warranty.

## Beware of Fakes and Imitations

Other manufacturers use painted stone which quickly changes colour due to UV and comes off easily in rain and installation due to low quality basecoats.



*"People have conned it and are using generics which has spoilt its name... Africans have started manufacturing a profile for 'Decra' with metal and then painting it and if you use it here at the beach within five years it is finished."*  
— African customer

#GenuineDecra

**DECRA**<sup>®</sup>  
ROOFING SYSTEMS



# ENVIRONMENTAL BEAUTY

## ENVIRONMENTALLY FRIENDLY

We are justifiably proud of our reputation as the world's leading manufacturer of top quality, chip coated, pressed metal roofing tiles, which are produced in one of the cleanest and most pollution-free environments in the world. Our steel is manufactured in a unique process by New Zealand Steel from black iron sand, found on the West Coast beaches of the North Island.

## PAINT AND BASECOAT

The main component of our paint system is acrylic resin, produced in New Zealand. All our coatings are water-based or water dispersed. The 'chip' used to coat our textured roof tiles are crushed natural rock, quarried in New Zealand.

## MANUFACTURING PROCESS

The significant part of the energy we use is derived from hydro power. Air and water emissions comply with all of New Zealand's environmental regulations. Our packaging materials consist of cardboard wraps and pallets from sustainable forests and can be recycled for further use. The plastic wraps are derived from petrochemical sources and can be recycled. The installation process uses no processes which emit heat or fumes and most of the process is manual.

## DISPOSAL/RECYCLING

The product on the roof emits no fumes or water-based emissions and degrades very slowly over a number of decades. Providing the product is correctly installed to our specifications, we confidently give 50 year limited warranty. The ultimate disposal of steel roofing is by recycling in steel recovery plants and processing into new steel products.

## RAINWATER RUN-OFF

The effect of roofing materials on the quality of rainwater run-off is of major importance. Property owners can collect rainwater in large tanks for domestic and agricultural use. We have carried out tests which clearly show that rainwater run-off from Decra® roofs are well within WHO (World Health Organisation) guidelines.

## HEALTH AND SAFETY

The safety and well-being of employees is of major consideration to AHI Roofing. Health and safety initiatives are in place throughout our factories.



# WE CHOSE DECRA



## THE HOMEOWNER

"For us, Decra was an easy choice. Firstly, it had to look good. Not just now, but in five to ten years time. Secondly, it had to provide security for our family, which Decra does. Thirdly, we didn't want any maintenance hassles, and never have with our Decra roof. All of this and the great service we received from the distributor made Decra our number one choice and we don't regret it for a minute."

## THE ARCHITECT

"The natural stone finish on Decra roof tiles gives the roof a really interesting look. It's difficult to match the performance and quality of Decra. Even though there are other products like it, they are never as good, especially after installation, when the colour can often fade. Decra always remains vibrant. For our clients near the coast, we would recommend Decra for sure, as it doesn't corrode and it does come with a fifty year warranty."



## THE DEVELOPER



"On time and on budget - is the phrase we live by, and Decra helps us deliver this. Using Decra adds value to our project as people like the look of their roofs and the security they offer. The service we receive from the distributor is great and we've never had a problem using their products. As builders of high quality homes, I'd never suggest trying to buy a roof on the cheap - it's just not worth the hassle. Considering the roof's job, it's one area you want to know that works."

## THE INSTALLER

"I have worked with a lot of roofs, but Decra is the best! I always recommend Decra to my clients, it is the highest quality, performs well and doesn't require maintenance. It is also very secure and safe. Decra trains us well, so we know about the company and that they invented the steel roof tile. Installing Decra is a pleasure, it's well made so installation is easier and quicker than with some other materials. Plus, they don't get damaged like clay tiles do."



# TECHNICAL INFORMATION



## TILES

HERITAGE	MILANO	CLASSIC	SHAKE	SHINGLE	SLATE
 Overall Length 1320mm Length of Cover 1260mm Width of Cover 370mm Roof Cover Tile 0.46m <sup>2</sup> /tile Coverage 2.2 tiles/m <sup>2</sup> Unit Mass Chipped 2.9kg Unit Mass Painted 2.0kg	 Overall Length 1320mm Length of Cover 1260mm Width of Cover 370mm Roof Cover Tile 0.46m <sup>2</sup> /tile Coverage 2.2 tiles/m <sup>2</sup> Unit Mass Chipped 2.9kg Unit Mass Painted 2.0kg	 Overall Length 1320mm Length of Cover 1260mm Width of Cover 370mm Roof Cover Tile 0.46m <sup>2</sup> /tile Coverage 2.2 tiles/m <sup>2</sup> Unit Mass Chipped 2.9kg Unit Mass Painted 2.0kg	 Overall Length 1320mm Length of Cover 1260mm Width of Cover 370mm Roof Cover Tile 0.46m <sup>2</sup> /tile Coverage 2.2 tiles/m <sup>2</sup> Unit Mass Chipped 3.0kg	 Overall Length 1310mm Length of Cover 1250mm Width of Cover 370mm Roof Cover Tile 0.46m <sup>2</sup> /tile Coverage 2.2 tiles/m <sup>2</sup> Unit Mass Chipped 3.0kg	 Overall Length 1330mm Length of Cover 1250mm Width of Cover 370mm Roof Cover 0.416m <sup>2</sup> /tile Tile Coverage 2.2 tiles/m <sup>2</sup>

## TILE ACCESSORIES

 <b>BARREL TRIM</b> Overall Length 405mm Length of Cover 370mm Unit Mass Chipped 0.5kg	 <b>ANGLE TRIM</b> Overall Length 405mm Length of Cover 370mm Unit Mass Chipped 0.5kg	 <b>A-RIDGE</b> Overall Length 2000mm Length of Cover 1900mm Unit Mass Chipped 0.5kg
 <b>BOX BARGE</b> Overall Length 2000mm Length of Cover 1900mm Unit Mass Chipped 2.5kg	 <b>RIDGE HIP</b> Overall Length 2000mm Length of Cover 1900mm Unit Mass Chipped 2.0kg	 <b>SIDE FLASHING</b> Overall Length 2000mm Length of Cover 1900mm Unit Mass Chipped 1.4kg

## STEEL SPECIFICATION

<b>BASE STEEL</b>			
Thickness	0.4mm	#Grade A&B	*Grade A&B
Grade	G300		
<b>ZINC COATING</b>			
Mass	150g/m <sup>2</sup>	#AZ150	50oz/100ft <sup>2</sup>
Grade	AZ150		*AZ50
<b>TOTAL SUBSTRATE THICKNESS</b>			
	430µm	0.43mm	26 Gauge
# = ASTM A466M	* = ASTM A446		

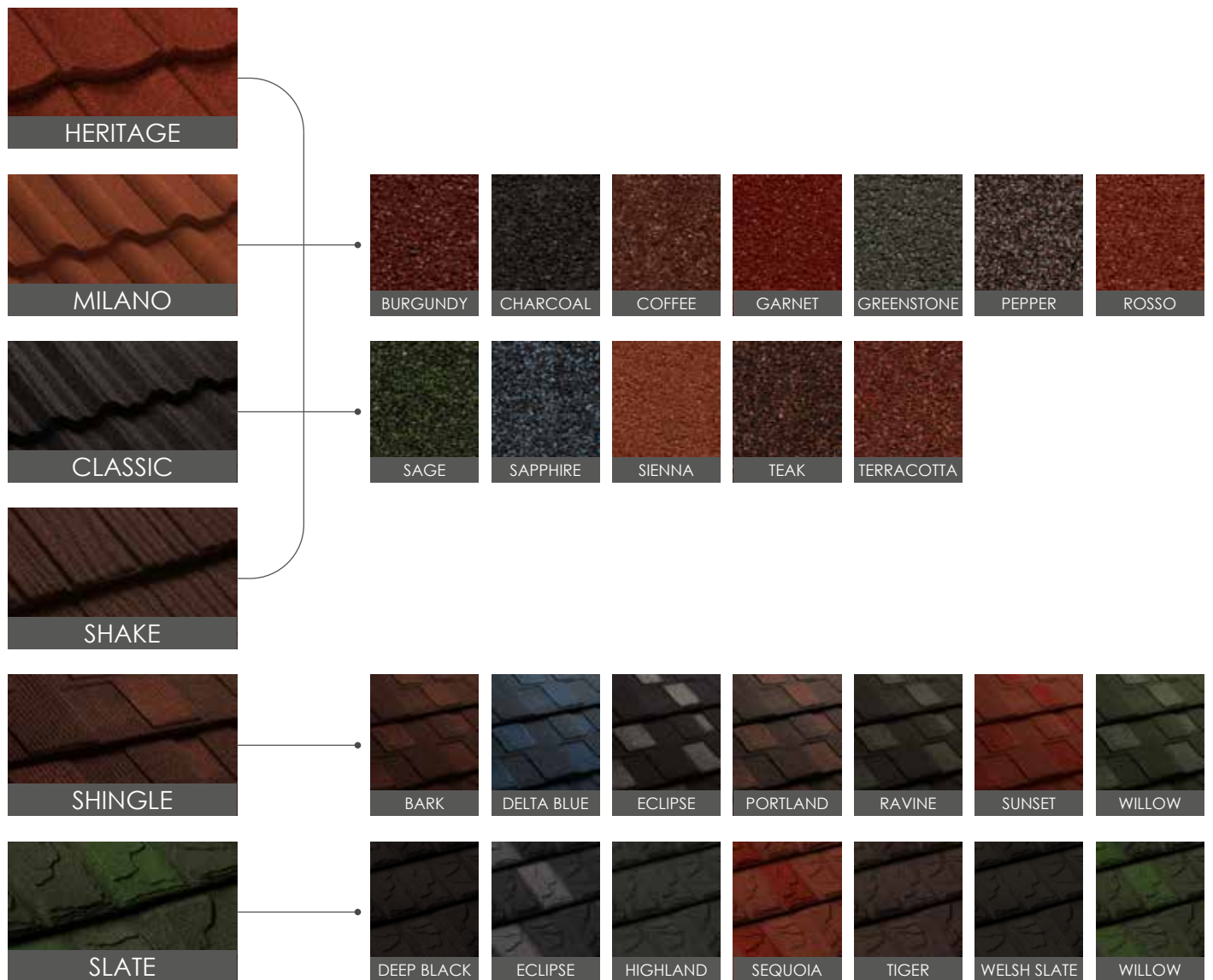
## ENERGY SAVING ACCESSORIES

 <b>ROOF WINDOW</b>	 <b>SUN TUNNEL</b>	 <b>VENT</b> Use for bathrooms or kitchens	 <b>COWL VENT</b>	 <b>DECRA® FOIL</b> Overall Length 48m Width 1.25m
----------------------------------------------------------------------------------------------------------	----------------------------------------------------------------------------------------------------------	-------------------------------------------------------------------------------------------------------------------------------------	----------------------------------------------------------------------------------------------------------	--------------------------------------------------------------------------------------------------------------------------------------------------

## CERTIFICATION



## TILE COLOURS



## PERFORMANCE



### FIRE

- Class A and B under UL 790 (ASTM E-108) when applied in accordance with instructions.



### HURRICANE

- Hurricane Test by Construction Research Laboratory Inc., Miami, Florida, USA.



### CORROSION

- Salt/fog Test to ASTM B117.
- 100% Relative Humidity Test to ASTM D2247.



### HAIL

- Hailstone Test by Commonwealth Scientific and Industrial Research Organisation, Division of Building, Construction and Engineering, Australia.



### LIGHTWEIGHT

- 7.0kg/m<sup>2</sup>.



### STRONG

- Concentrated Force on Roofing Tiles to Australian Standard 1582, Rule 5.2 by Cyclone Testing Station, Australia.



### SECURITY

- High speed dynamic Rain Penetration and High Wind Loading Tests by Construction Research Laboratory Inc., Miami, Florida, USA.



### RAIN (MONSOON)

- Cyclone Loading Test to wind loading code, Australian Standard 1170, Part 2 1975 by Cyclone Loading Station, Australia.

Genuine **DECRA** ROOFING SYSTEMS are only available from

## Installer Training - Investing in Africa

Established by Decra® to improve the quality of installation and empower local installers, our Installer Program is one of Africa's leading training courses. Supported by various national authorities, our installers are professionally trained and certified. For more information, visit: [www.decraafrica.com](http://www.decraafrica.com).



[www.decraafrica.com](http://www.decraafrica.com)



**#GenuineDecra**

